

PACKAGING & SHIPMENT SPECIFICATIONS

Applicable for the following REC solar panels:

- | | |
|-------------------------|--------------------------|
| REC Alpha Pure Series | REC Alpha Pure-R Series |
| REC Alpha Pure 2 Series | REC Alpha Pure-RX Series |
| REC N-Peak 3 Series | REC TwinPeak 5 Series |



CONTENTS

Introduction	3
REC Alpha Pure Series	4
REC Alpha Pure 2 Series	5
REC Alpha Pure-R Series	6
REC Alpha Pure-RX Series	7
REC N-Peak 3 Series*	8
REC TwinPeak 5 Series*	9

*Product only available in the USA

+ Product not available in the USA

INTRODUCTION

REC believes that the packaging of our products is just as important as the product itself. To ensure our solar panels arrive with our customers in as good condition as possible, REC takes every care to ensure a high quality level of packaging and uses international testing standards to ensure the panels reach their destination in the best condition. Except where specifically stated, the information given on the following pages is relevant to all modules in the product family named and is therefore applicable to all product variants, e.g., different colored frames, backsheets, and/or cell types. The images shown are a generic representation of the instructions regardless of color or exact design.



PALLET HANDLING

This document contains instructions concerning the use and handling of pallets of REC solar panels. Following these instructions will ensure that the panels are in the best condition upon arrival at the installation site. Misuse or failure to follow these procedures may lead to damage or injury, and may invalidate the warranty on the product.

QUALITY

REC performs a quality check on all pallets before and during loading. Vehicles will only be loaded if they are deemed safe and serviceable. During transportation, the pallets are stably loaded in protected containers with air bags between them to secure them in position. The freight company and driver are responsible for ensuring suitable load safety for each delivery vehicle. Vehicles without suitable load safety measures will not be loaded. Loading without the use of air bags or loading belts to secure the pallets may lead to damage to the pallet(s) and/or module(s) during transportation which may invalidate the warranty. If using loading belts to secure pallets, ensure these are correctly fitted as over-tightening may cause damage to the modules or pallet(s).



RECYCLING

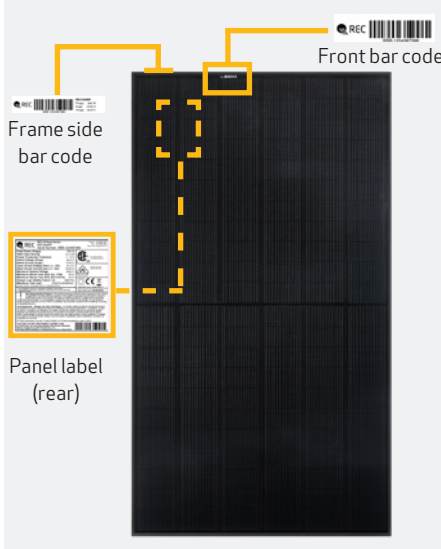
REC makes every effort to ensure the panel packaging is kept to a minimum and that environmentally-friendly materials are used wherever possible. This minimizes waste and discarded items to dispose of at the installation site. The wooden pallets can be re-used or recycled. The paper and cardboard packaging used on REC pallets can be also be widely recycled and the protective wrapping and panel separating blocks are also recyclable in many areas. Please check for all applicable procedures and recycle all packaging and panels according to local guidelines and regulations. REC makes every effort to ensure environmentally-friendly packaging materials are used. Please recycle whenever possible.

REC ALPHA PURE SERIES

PALLET FRONT VIEW (DOUBLE STACKED)



PANEL IDENTIFICATION



PALLET SHIPMENT DIMENSIONS

Length of pallet:	1880 mm (74 in)
Width of pallet:	1055 mm (41.5 in)
Height of single pallet stack:	1205 mm (47.5 in)
Height of double pallet stack:	2410 mm (95 in)
Pallet weight:	41 kg (90.4 lbs)
Stack weight (pallet + panels):	ca. 735 kg (1620 lbs)

DELIVERY INFORMATION

Panels per pallet:	33
Panels per 40 ft GP/high cube container:	792 24 pallets
Panels per 13.6 m truck:	924 28 pallets
Panels per 53 ft truck:	858 26 pallets

PALLET SIDE VIEW (DOUBLE STACKED)



PALLET STACKING



DELIVERY DOCUMENTATION

Documentation is located on short side of pallet. Pallet documentation includes:

- Module flash data
- Serial number
- Product name
- Watt class

PACKAGING MATERIAL

Pallet:	Wood
Foam pad:	Polyurethane Polyether Polyol
Top cover:	Corrugated cardboard
Edge protectors:	Core board - Kraft
Corner pieces and spacers:	HDPE

PACKAGING DOCUMENTATION

REC395AA Pure

Parts: **6002462**

Pallet No: **L3394796_AAAA**

No.	Serial	Imp[A]	Prog[W]	No.	Serial	Imp[A]	Prog[W]
1	4008721147	9.587	396.8	18	4008720961	9.588	395.9
2	4008721051	9.563	396.8	19	4008721071	9.594	396.8
3	4008720948	9.575	397.6	20	4008721044	9.598	396.7
4	4008721168	9.582	396.7	21	4008721043	9.578	397.8
5	4008720969	9.586	396.1	22	4008721042	9.572	395.9
6	4008721128	9.590	399.8	23	4008721036	9.592	399.8
7	4008721171	9.566	396.7	24	4008720928	9.576	397.3
8	4008721014	9.589	396.1	25	4008721063	9.611	397.6
9	4008721078	9.580	397.2	26	4008721049	9.568	395.6
10	4008721114	9.578	396.6	27	4008721033	9.559	395.9
11	4008720943	9.584	396.4	28	4008721040	9.571	396.1
12	4008721084	9.580	396.1	29	4008721166	9.586	395.1
13	4008721088	9.594	396.3	30	4008721048	9.598	397.4
14	4008721072	9.579	396.2	31	4008720908	9.569	395.3
15	4008721075	9.593	396.7	32	4008720956	9.566	395.8
16	4008721087	9.593	397.8	33	4008720956	9.588	395.3
17	4008721064	9.563	396.1				

Attention!

Weight: 735 kg (1620 lbs)

Improper handling will damage the content

Vorsicht!

Gewicht: 735 kg (1620 lbs)

Unsachgemäßer Transport führt zur Beschädigung der Ware

Quality Stamp

QUALITY

17/06/2021 10:43

ACCEPTED

Panel Handling

Attention

Wear clean gloves

Installation instructions:
Installationsanleitungen:
Guides d'emploi:
20.08.2019

www.recgroup.com/downloads

Made in Singapore

STORAGE AND TRANSPORTATION

Stacking for storage:	2 pallets max
Stacking for transportation:	2 pallets max

Note: When double stacking pallets, ensure the upper pallet sits securely on the edge protector to avoid damage to the lower pallet during transportation or handling

Note: Pallets delivered stacked are not bound together

MINIMUM FORK LENGTHS FOR TRANSPORTATION

		Single/Double stack only
Forklift	Long side	1.2 m (47 in)
	Short side	1.5 m (59 in)
Pallet jack	Long side	X
	Short side	1.5 m (59 in)

Note: Forks must be spaced a minimum of 500 mm apart. Handlers must ensure that vehicles used for REC pallets can handle the specified load safely.

Note: Specifications subject to change without notice

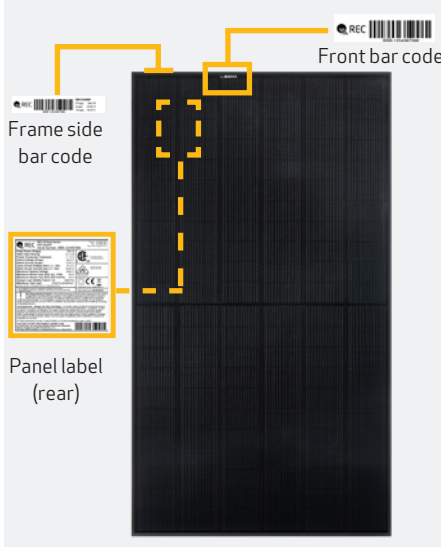
- Pallet No. 1 is the top module in a stack
- Pallet No. 33 is the lowest module in a stack
- Pallet documentation shows:
 - Module serial number
 - Module bar code
 - Manufacturing date
 - Electrical data (I_{MP}, P_{MP})

REC ALPHA PURE 2 SERIES

PALLET FRONT VIEW (DOUBLE STACKED)



PANEL IDENTIFICATION



PALLET SHIPMENT DIMENSIONS

Length of pallet:	1910 mm (75.2 in)
Width of pallet:	1090 mm (42.9 in)
Height of single pallet stack:	1205 mm (47.5 in)
Height of double pallet stack:	2410 mm (95 in)
Pallet weight:	40 kg (88.2 lbs)
Stack weight (pallet + panels):	ca. 753 kg (1660 lbs)

DELIVERY INFORMATION

Panels per pallet:	33
Panels per 40 ft GP/high cube container:	792 24 pallets
Panels per 13.6 m truck:	924 28 pallets
Panels per 53 ft truck:	858 26 pallets

PALLET SIDE VIEW (DOUBLE STACKED)



PALLET STACKING



DELIVERY DOCUMENTATION

Documentation is located on short side of pallet. Pallet documentation includes:

- Module flash data
- Serial number
- Product name
- Watt class

PACKAGING MATERIAL

Pallet:	Wood
Foam pad:	Polyurethane Polyether Polyol
Top cover:	Corrugated cardboard
Edge protectors:	Core board - Kraft
Corner pieces and spacers:	HDPE

PACKAGING DOCUMENTATION

REC420AA Pure 2

Part No. **600000**

Pallet No: **L1234567_AAAA**

No.	Serial Number	Imp[A]	Prog[0]	No.	Serial Number	Imp[A]	Prog[0]
1	9180	451.1	30	17	9187	451.8	30
2	9181	451.2	30	18	9188	451.9	30
3	9182	451.3	30	19	9189	452.0	30
4	9183	451.4	30	20	9190	452.1	30
5	9184	451.5	30	21	9191	452.2	30
6	9185	451.6	30	22	9192	452.3	30
7	9186	451.7	30	23	9193	452.4	30
8	9187	451.8	30	24	9194	452.5	30
9	9188	451.9	30	25	9195	452.6	30
10	9189	452.0	30	26	9196	452.7	30
11	9190	452.1	30	27	9197	452.8	30
12	9191	452.2	30	28	9198	452.9	30
13	9192	452.3	30	29	9199	453.0	30
14	9193	452.4	30	30	9200	453.1	30
15	9194	452.5	30	31	9201	453.2	30
16	9195	452.6	30	32	9202	453.3	30
17	9196	452.7	30	33	9203	453.4	30

Modules: 33

Bottom

REC

Attention! Vorsicht!

Weight: 753 kg (1660 lbs) Gewicht: 753 kg (1660 lbs)

Improper handling will damage the content! Unsachgemäße Transport führt zur Beschädigung der Ware

Quality Stamp Panel Handling

1607002 843 ACCEPTED

Wear clean gloves

Legal information about recycling for customers in Germany: Informationen für private Haushalte: Dieser Artikel ist ein Produkt aus 100% recyceltem Material. Bitte trennen Sie ihn von anderen Abfällen und entsorgen Sie ihn in der dafür vorgesehenen Sammelbox für Papier und Pappe.

Electro- und Elektronikgeräte, die als Altöl gewertet sind, werden als Abfälle behandelt. Derartige Abfälle dürfen keinesfalls mit sonstigen Abfällen gemischt oder in die Umwelt entlassen werden. Abfälle gehören insbesondere nicht in den Hausmüll, sondern in spezielle Sammel- und Packstationen.

Resistor von Algorithmen aus privaten Haushalten können diese bei den Stromleitungen der öffentlichen Stromversorgungsanlagen oder bei den Hochspannungsleitungen in Betrieb sein. Elektrik- und Elektronikgeräten sind daher vor dem Entsorgen zu trennen. Bitte beachten Sie die Anweisungen des Herstellers.

Das auf Elektro- und Elektronikgeräten regelmäßig abgebildete Symbol zeigt den Europäischen Mülltrennungsschlüssel für die Entsorgung. Bitte beachten Sie die Anweisungen des Herstellers.

Bestellnummer: 600000
 Hersteller: REC
 2020.01.01
 www.recgroup.com/india

Made in Singapore

- Pallet No. 1 is the top module in a stack
- Pallet No. 33 is the lowest module in a stack
- Pallet documentation shows:
 - Module serial number
 - Module bar code
 - Manufacturing date
 - Electrical data (I_{MP}, P_{MP})

STORAGE AND TRANSPORTATION

Stacking for storage:	2 pallets max
Stacking for transportation:	2 pallets max

Note: When double stacking pallets, ensure the upper pallet sits securely on the edge protector to avoid damage to the lower pallet during transportation or handling

Note: Pallets delivered stacked are not bound together

MINIMUM FORK LENGTHS FOR TRANSPORTATION

		Single/Double stack only
Forklift	Long side	1.2 m (47 in)
	Short side	1.5 m (59 in)
Pallet jack	Long side	X
	Short side	1.5 m (59 in)

Note: Forks must be spaced a minimum of 500 mm apart. Handlers must ensure that vehicles used for REC pallets can handle the specified load safely.

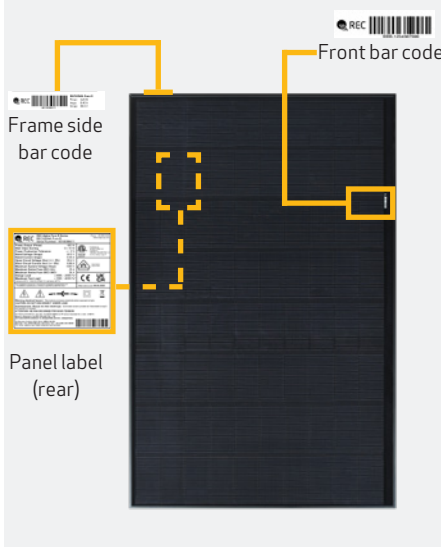
Note: Specifications subject to change without notice

REC ALPHA PURE-R SERIES

PALLET FRONT VIEW (DOUBLE STACKED)



PANEL IDENTIFICATION



PALLET SHIPMENT DIMENSIONS

Length of pallet:	1780 mm (70 in)
Width of pallet:	1150 mm (45.2 in)
Height of single pallet stack:	1220 mm (48 in)
Height of double pallet stack:	2440 mm (96 in)
Pallet weight:	39 kg (86 lbs)
Stack weight (pallet + panels):	ca. 753 kg (1660 lbs)

DELIVERY INFORMATION

Panels per pallet:	33
Panels per 40 ft GP/high cube container:	858 (26 pallets)
Panels per 13.6 m truck:	924 (28 pallets)
Panels per 53 ft truck:	858 (26 pallets)

PALLET SIDE VIEW (DOUBLE STACKED)



PALLET STACKING



DELIVERY DOCUMENTATION

Documentation is located on short side of pallet.

Pallet documentation includes:

- Module flash data
- Serial number
- Product name
- Watt class

PACKAGING MATERIAL

Pallet:	Wood
Foam pad:	Polyurethane Polyether Polyol
Top cover:	Corrugated cardboard
Edge protectors:	Core board - Kraft
Corner pieces and spacers:	HDPE

PACKAGING DOCUMENTATION

REC410AA Pure-R REC

Part: **6002462** Pallet No: **L3394796_AAAA**

No.	Serial	Top	Impj(A)	Pmpj(W)	No.	Serial	Bottom	Impj(A)	Pmpj(W)
1)	4088721047	9.587	396.8	19)	4088720961	9.588	395.9		
2)	4088721050	9.582	396.8	19)	4088721071	9.594	396.8		
3)	4088720968	9.576	397.6	20)	4088721041	9.590	396.7		
4)	4088721018	9.582	396.7	21)	4088721049	9.578	397.0		
5)	4088720969	9.586	396.1	22)	4088721042	9.572	395.9		
6)	4088721028	9.586	396.8	23)	4088721036	9.592	396.8		
7)	4088721171	9.586	396.7	24)	4088720928	9.576	397.2		
8)	4088721014	9.589	396.1	25)	4088721083	9.611	397.6		
9)	4088721078	9.589	397.2	26)	4088721049	9.588	396.4		
10)	4088721114	9.578	396.6	27)	4088721033	9.589	395.9		
11)	4088720943	9.584	396.4	28)	4088721040	9.571	396.1		
12)	4088721084	9.580	396.1	29)	4088721016	9.586	396.1		
13)	4088721088	9.584	396.3	30)	4088721048	9.596	397.4		
14)	4088721072	9.579	396.2	31)	4088720938	9.589	395.8		
15)	4088721075	9.593	396.7	32)	4088720956	9.566	395.8		
16)	4088721087	9.592	397.0	33)	4088720992	9.588	395.3		
17)	4088721064	9.563	396.1						

Attention / Vorsicht

Weight: 753 kg (1660 lbs) / Gewicht: 753 kg (1660 lbs)

Improper handling will damage the content / Unsachgemäßer Transport führt zur Beschädigung der Ware

Quality Stamp: 17/06/2021 10:43 ACCEPTED

Panel Handling: Attention Wear clean gloves

Installation instructions: Installationsanleitung / Guides d'emploi: 安装说明书

www.recgroup.com/en/products

- Pallet No. 1 is the top module in a stack
- Pallet No. 33 is the lowest module in a stack
- Pallet documentation shows:
 - Module serial number
 - Module bar code
 - Manufacturing date
 - Electrical data (I_{MP}, P_{MP})

STORAGE AND TRANSPORTATION

Stacking for storage: 2 pallets max

Stacking for transportation: 2 pallets max

Note: When double stacking pallets, ensure the upper pallet sits securely on the edge protector to avoid damage to the lower pallet during transportation or handling

Note: Pallets delivered stacked are not bound together

MINIMUM FORK LENGTHS FOR TRANSPORTATION

		Single/Double stack only
Forklift	Long side	1.2 m (47 in)
	Short side	1.5 m (59 in)
Pallet jack	Long side	X
	Short side	1.5 m (59 in)

Note: Forks must be spaced a minimum of 500 mm apart

Handlers must ensure that vehicles used for REC pallets can handle the specified load safely.

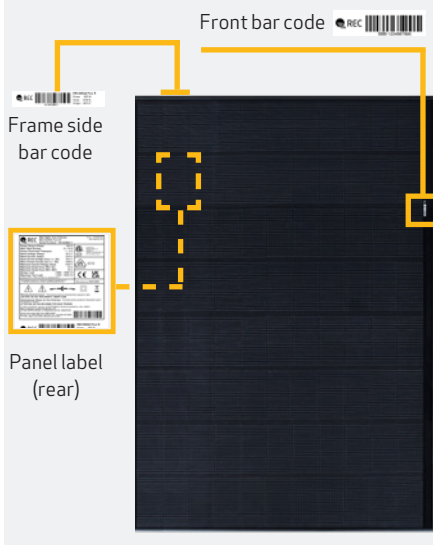
Note: Specifications subject to change without notice

REC ALPHA PURE-RX SERIES

PALLET FRONT VIEW (DOUBLE STACKED)



PANEL IDENTIFICATION



PALLET SHIPMENT DIMENSIONS

Length of pallet:	1780 mm (70 in)
Width of pallet:	1240 mm (49 in)
Height of single pallet stack:	1220 mm (48 in)
Height of double pallet stack:	2440 mm (96 in)
Pallet weight:	~44 kg (97 lbs)
Stack weight (pallet + panels):	ca. 800 kg (1764 lbs)

DELIVERY INFORMATION

Panels per pallet:	33
Panels per 40 ft GP/high cube container:	594 (18 pallets)
Panels per 13.6 m truck:	660 (20 pallets)
Panels per 53 ft truck:	792 (24 pallets)

PALLET SIDE VIEW (DOUBLE STACKED)



PALLET STACKING



DELIVERY DOCUMENTATION

Documentation is located on short side of pallet. Pallet documentation includes:

- Module flash data
- Serial number
- Product name
- Watt class

PACKAGING MATERIAL

Pallet:	Wood
Foam pad:	Polyurethane Polyether Polyol
Top cover:	Corrugated cardboard
Edge protectors:	Core board - Kraft
Corner pieces and spacers:	HDPE

PACKAGING DOCUMENTATION

REC460AA Pure-RX

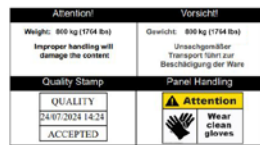
Part: **Top** 003527

Pallet No: L.6213812_AAAA

No.	Serial Number	Imp(A)	Prog(W)	No.	Serial Number	Imp(A)	Prog(W)
13	7066148919	8,229	464,6	19	7066148941	8,229	463,7
21	7066148942	8,232	463,2	25	7066148947	8,218	465,9
23	7066148943	8,202	463,3	26	7066148947	8,228	465,5
41	7066148924	8,225	464,6	28	7066148951	8,222	464,6
43	7066148947	8,226	464,3	32	7066148952	8,229	464,8
45	7066148942	8,228	464,7	33	7066148951	8,224	463,9
47	7066148932	8,241	463,3	34	7066148952	8,229	464,8
49	7066148938	8,216	464,9	35	7066148958	8,225	464,3
51	7066148946	8,228	463,2	36	7066148960	8,216	463,2
58	7066148954	8,228	463,7	37	7066148970	8,228	463,8
63	7066148944	8,226	464,8	38	7066148941	8,226	463,2
71	7066148929	8,296	463,7	39	7066148924	8,218	463,3
73	7066148912	8,249	466,8	38	7066149114	8,217	465,9
14	7066148946	8,229	464,2	39	7066148933	8,228	463,7
15	7066148948	8,227	463,9	39	7066148932	8,221	463,7
16	7066148928	8,225	464,3	39	7066148928	8,224	463,8
17	7066148979	8,226	464,6				

Modules: 33

Bottom



Legal information about recycling for customers in Germany:
 Informationen für private Rückhändler:
 Hersteller: Informationsseite gemäß § 18 Abs. 4 ElektroG (2002)
 Elektro- und Elektronikgeräte, die zu Altteil geworden sind, werden als Abfälle bezeichnet. Besitzer von Altgeräten haben diese einer vom Hersteller bereitgestellten gesonderten Entsorgung ausföhren. Abfälle gehören insbesondere nicht in den Hausmüll, sondern in spezielle Sammel- und Rückgabesysteme.
 Besitzer von Altgeräten aus privaten Haushalten können diese bei den Dienstleistern der öffentlich-rechtlichen Entsorgungsträger oder bei den vom Hersteller beauftragten Unternehmen im Sinne des ElektroG eingeschickten Rücknahmestellen umweltgerecht abgeben.
 Das auf Elektro- und Elektronikgeräten regelmäßig abgebildete Symbol eines durchgehenden Pfeiles weist darauf hin, dass das jeweilige Gerät ein Ende seiner Lebensdauer erreichen kann und/oder dem Recycling zugeführt zu werden ist.
 Installations instructions:
 Qualitat d'emploi:
 22 22 22 22
 www.mcgroup.com/usa/usa

Made in Singapore

- Pallet No. 1 is the top module in a stack
- Pallet No. 33 is the lowest module in a stack
- Pallet documentation shows:
 - Module serial number
 - Module bar code
 - Manufacturing date
 - Electrical data (I_{MP}, P_{MP})

STORAGE AND TRANSPORTATION

Stacking for storage:	2 pallets max
Stacking for transportation:	2 pallets max

Note: When double stacking pallets, ensure the upper pallet sits securely on the edge protector to avoid damage to the lower pallet during transportation or handling

Note: Pallets delivered stacked are not bound together

MINIMUM FORK LENGTHS FOR TRANSPORTATION

		Single/Double stack only
Forklift	Long side	1.2 m (47 in)
	Short side	1.5 m (59 in)
Pallet jack	Long side	X
	Short side	1.5 m (59 in)

Note: Forks must be spaced a minimum of 500 mm apart. Handlers must ensure that vehicles used for REC pallets can handle the specified load safely.

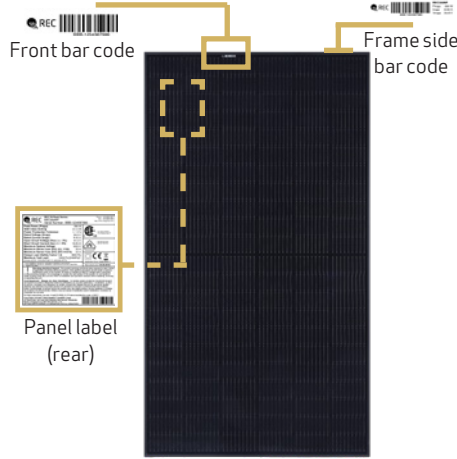
Note: Specifications subject to change without notice

REC N-PEAK 3 SERIES (ONLY AVAILABLE IN THE USA)

PALLET FRONT VIEW (DOUBLE STACKED)



PANEL IDENTIFICATION



PALLET SHIPMENT DIMENSIONS

Length of pallet:	76.7 in
Width of pallet:	43 in
Height of single pallet stack:	47.5 in
Height of double pallet stack:	95 in
Pallet weight:	88.2 lbs
Stack weight (pallet + panels):	ca. 1660 lbs

DELIVERY INFORMATION

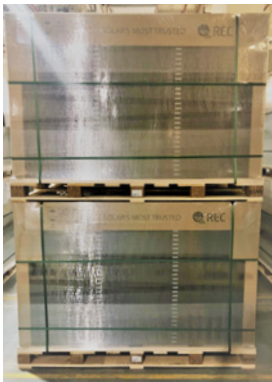
Panels per pallet:	33
Panels per GP/high cube container (40 ft):	792 (24 pallets)
Panels per 53 ft truck:	858 (26 pallets)

DELIVERY DOCUMENTATION

Documentation is located on short side of pallet.
Pallet documentation includes:

- Module flash data
- Serial number
- Product name
- Watt class

PALLET SIDE VIEW (DOUBLE STACKED)



PALLET STACKING



PACKAGING MATERIAL

Pallet:	Wood
Foam pad:	Polyurethane Polyether Polyol
Top cover:	Corrugated cardboard
Edge protectors:	Coreboard - Kraft
Corner pieces and spacers:	HDPE

STORAGE AND TRANSPORTATION

Stacking for storage:	2 pallets max
Stacking for transportation:	2 pallets max

Note: When double stacking pallets, ensure the upper pallet sits securely on the edge protector to avoid damage to the lower pallet during transportation or handling

Note: Pallets delivered stacked are not bound together.

PACKAGING DOCUMENTATION

RECXXXNP3 Black

Part: **Top 500000** Pallet No: **L1234567_AAAA**

No. Serial	Impg(A)	Prng(W)	No. Serial	Impg(A)	Prng(W)
1) 9780 012.9	30) 9876 012.9		31) 9876 012.9		
2) 9781 013.9	31) 9876 013.9		32) 9876 013.9		
3) 9782 014.9	32) 9876 014.9		33) 9876 014.9		
4) 9783 015.9	33) 9876 015.9		34) 9876 015.9		
5) 9784 016.9	34) 9876 016.9		35) 9876 016.9		
6) 9785 017.9	35) 9876 017.9		36) 9876 017.9		
7) 9786 018.9	36) 9876 018.9		37) 9876 018.9		
8) 9787 019.9	37) 9876 019.9		38) 9876 019.9		
9) 9788 020.9	38) 9876 020.9		39) 9876 020.9		
10) 9789 021.9	39) 9876 021.9		40) 9876 021.9		
11) 9790 022.9	40) 9876 022.9		41) 9876 022.9		
12) 9791 023.9	41) 9876 023.9		42) 9876 023.9		
13) 9792 024.9	42) 9876 024.9		43) 9876 024.9		
14) 9793 025.9	43) 9876 025.9		44) 9876 025.9		
15) 9794 026.9	44) 9876 026.9		45) 9876 026.9		
16) 9795 027.9	45) 9876 027.9		46) 9876 027.9		
17) 9796 028.9	46) 9876 028.9		47) 9876 028.9		
18) 9797 029.9	47) 9876 029.9		48) 9876 029.9		
19) 9798 030.9	48) 9876 030.9		49) 9876 030.9		
20) 9799 031.9	49) 9876 031.9		50) 9876 031.9		

Attention! Vorsicht!

Impropre handling will damage the content! Unsachgemäßer Transport führt zur Beschädigung der Ware!

Quality Stamp: QUALITY 18/07/2017 8:43 ACCEPTED

Panel Handling: Attention Wear clean gloves

Legal information about recycling for customers in Germany: Informationen für private Haushalte: Recycling-Informationen gemäß § 9 Abs. 4 (ElektroG) (www.elektro-g.de)

Elektrische und Elektronikgeräte, die zu Altöl geworden sind, werden als Abfälle betrachtet. Beachtet vor Abgeben haben diese eine sehr empfindlichen Schadstoffgehalt. Bitte beachten Sie die folgenden Hinweise: Abgabe an einen geeigneten Sammel- und Entsorgungssystem. Beachtet vor Abgeben aus privaten Haushalten können diese bei den Sammelstellen der öffentlichen Sammel- und Entsorgungssysteme oder bei den von Herstellern oder Lieferanten im Sinne des ElektroG angebotenen Rücknahmestellen angenommen werden.

Das auf Elektro- und Elektronikgeräten regelmäßig abgebildete Symbol einer durchgestrichenen Mülltonne weist darauf hin, dass das jeweilige Gerät ein Elektro- oder Elektronikgerät gemäß vom ungarischen Gesetzgebungsorgan ist zu entsorgen ist.

Recycling-Symbol für die Rückgabe von Elektro- und Elektronikgeräten: Gebrauchtes elektronisches Gerät: Gebraucht / e-waste: 2018/08/01: www.enr.com/usedebids

Made in Singapore

MINIMUM FORK LENGTHS FOR TRANSPORTATION

		Single/Double stack only
Forklift	Long side	47 in Loading & unloading of container only
	Short side	59 in
Pallet jack	Long side	X
	Short side	59 in

Note: Forks must be spaced a minimum of 20 in apart
Handlers must ensure that vehicles used for REC pallets can handle the specified load safely.

Note: Specifications subject to change without notice

- Pallet No. 1 is the top module in a stack
- Pallet No. 33 is the lowest module in a stack
- Pallet documentation shows:
 - Module serial number
 - Module bar code
 - Manufacturing date
 - Electrical data (I_{MP}, P_{MP})

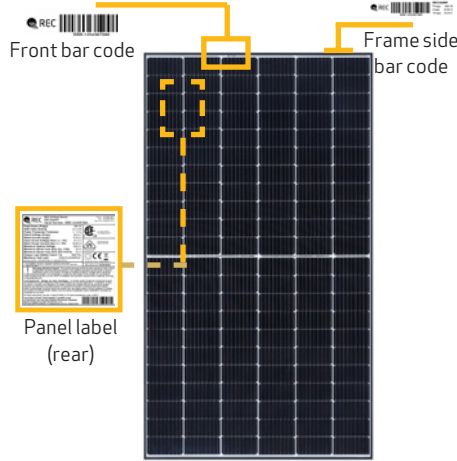
REC TWINPEAK 5 SERIES (NOT AVAILABLE IN THE USA)

These packaging specifications are applicable to the following products:
 REC TwinPeak 5 Series REC TwinPeak 5 Black Series

PALLET FRONT VIEW (DOUBLE STACKED)



PANEL IDENTIFICATION



PALLET SHIPMENT DIMENSIONS

Length of pallet:	1950 mm
Width of pallet:	1090 mm
Height of single pallet stack:	1205 mm
Height of double pallet stack:	2410 mm
Pallet weight:	40 kg
Stack weight (pallet + panels):	ca. 753 kg

DELIVERY INFORMATION

Panels per pallet:	33
Panels per GP/high cube container (40 ft):	792 (24 pallets)
Panels per 13.6 m truck:	924 (28 pallets)

DELIVERY DOCUMENTATION

Flash data list:	On short side
Serial number list:	On short side
Product name:	On long side
Watt class:	On long side

PACKAGING MATERIAL

Pallet:	Wood
Foam pad:	Polyurethane Polyether Polyol
Top cover:	Corrugated cardboard
Edge protectors:	Core board - Kraft
Corner pieces and spacers:	HDPE

STORAGE AND TRANSPORTATION

Stacking for storage:	2 pallets max
Stacking for transportation:	2 pallets max

Note: When double stacking pallets, ensure the upper pallet sits securely on the edge protector to avoid damage to the lower pallet during transportation or handling

Note: Pallets delivered stacked are not bound together.

MINIMUM FORK LENGTHS FOR TRANSPORTATION

		Single/Double stack only
Forklift	Long side	1.2 m
	Short side	1.5 m
Pallet jack	Long side	X
	Short side	1.5 m

Note: Forks must be spaced a minimum of 500 mm apart
 Handlers must ensure that vehicles used for REC pallets can handle the specified load safely.

Note: Specifications subject to change without notice

PALLET SIDE VIEW (DOUBLE STACKED)



PALLET STACKING



PACKAGING DOCUMENTATION

RECXXTP5 Black

Part: **Top 600000** Pallet No: **L1234567_AA**

No.	Serial	Imp(A)	Prog(W)	No.	Serial Number	Imp(A)	Prog(W)
1	9895	402.9	20	1878543219	9786	402.4	
2	9788	402.9	20	1878543219	9854	402.9	
3	9782	402.9	20	1878543219	9729	402.9	
4	9729	402.2	23	1878543219	9899	402.2	
5	9782	402.2	23	1878543219	9874	402.8	
6	9729	402.9	20	1878543219	9750	402.8	
7	9886	402.7	24	1878543219	9864	402.4	
8	9782	402.8	20	1878543219	9758	402.8	
9	9886	402.2	24	1878543219	9863	402.2	
10	9887	402.8	27	1878543219	9889	402.7	
11	9880	402.9	20	1878543219	9742	402.2	
12	9898	402.8	20	1878543219	9843	402.2	
13	9898	402.8	20	1878543219	9873	402.9	
14	9721	402.8	30	1878543219	9883	402.8	
15	9880	402.7	32	1878543219	9724	402.9	
16	9888	402.3	33	1878543219	9850	402.3	
17	9887	402.8					

Modules: 33

REC

Attention! Vorsicht!

Weight: 753 kg (1660 lbs) Gewicht: 753 kg (1660 lbs)

Impulsive handling will damage the content Unsachgemäßer Transport führt zur Beschädigung der Ware

Quality Stamp Panel Handling

QUALITY Attention

18972022 8-43 Wear clean gloves

ACCEPTED [Hand icon]

Legal information about recycling for customers in Germany:
 Informationen für private Haushalte:
 Einmalige Gebrauchsgüter, die zu Altöl geworden sind, werden als Abfälle behandelt. Einmalige Gebrauchsgüter, die aus einem verschleißenden, wiederverwendbaren Material gefertigt sind, werden als Abfälle behandelt.
 Gebrauchsgüter aus privaten Haushalten können diese bei den Sammelstellen für öffentlich-rechtlichen Entsorgungsgütern oder bei den von Herstellern oder Vertriebspartnern im Sinne des ElektroG eingerichteten Rücknahmestellen unvergütlich abgegeben werden.
 Das auf Elektro- und Elektronikgeräten regelmäßig abgebildete Symbol einer durchgebrochenen Mülltonne weist darauf hin, dass das jeweilige Gerät am Ende seiner Lebensdauer getrennt vom anderen Abfall zu entsorgen ist.

Benötigte Informationen:
 Installationsanleitung:
 Callcenter #empool
 23.30.19.02
 www.recgroup.com/benutzerhandbuecher

Made in Singapore

- Pallet No. 1 is the top module in a stack
- Pallet No. 33 is the lowest module in a stack
- Pallet documentation shows:
 - Module serial number
 - Module bar code
 - Manufacturing date
 - Electrical data (I_{MP}, P_{MP})



REC SOLAR PTE. LTD.
20 TUAS SOUTH AVENUE 14
SINGAPORE 637312
SINGAPORE
Tel: +65 6495 9228
Mail: post@recgroup.com

www.recgroup.com